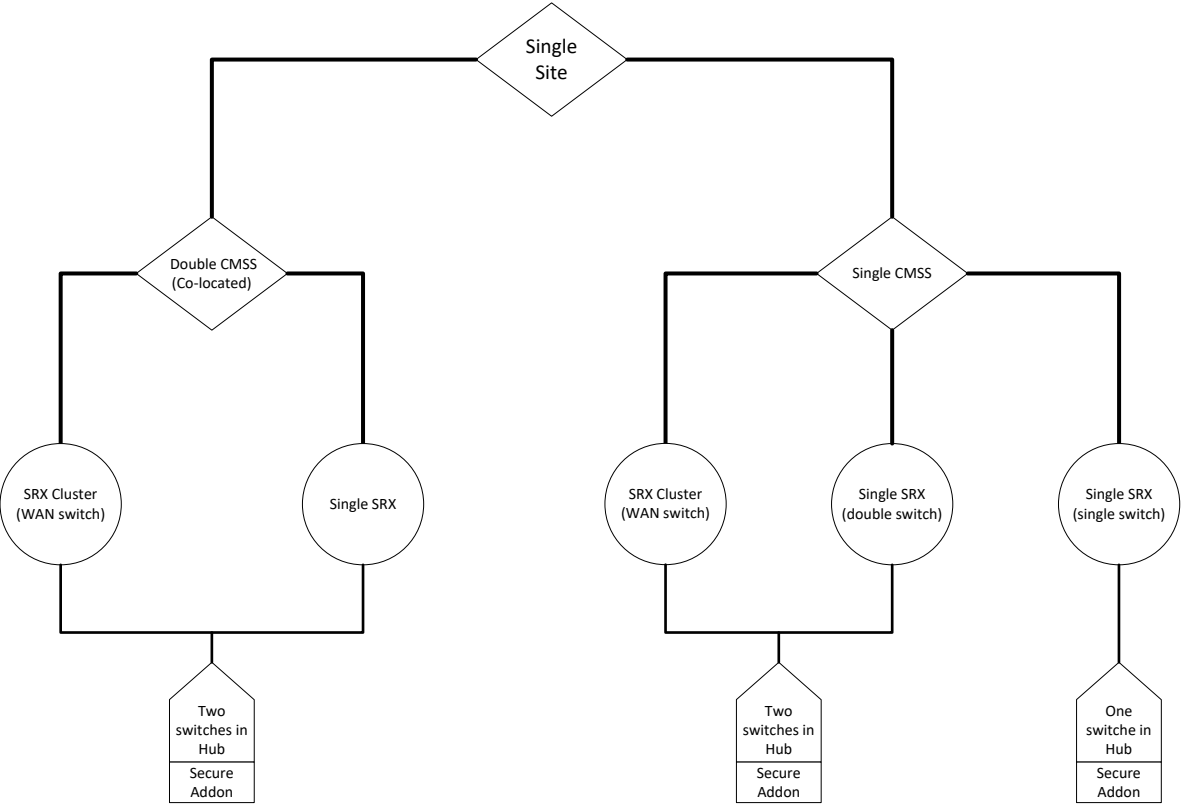


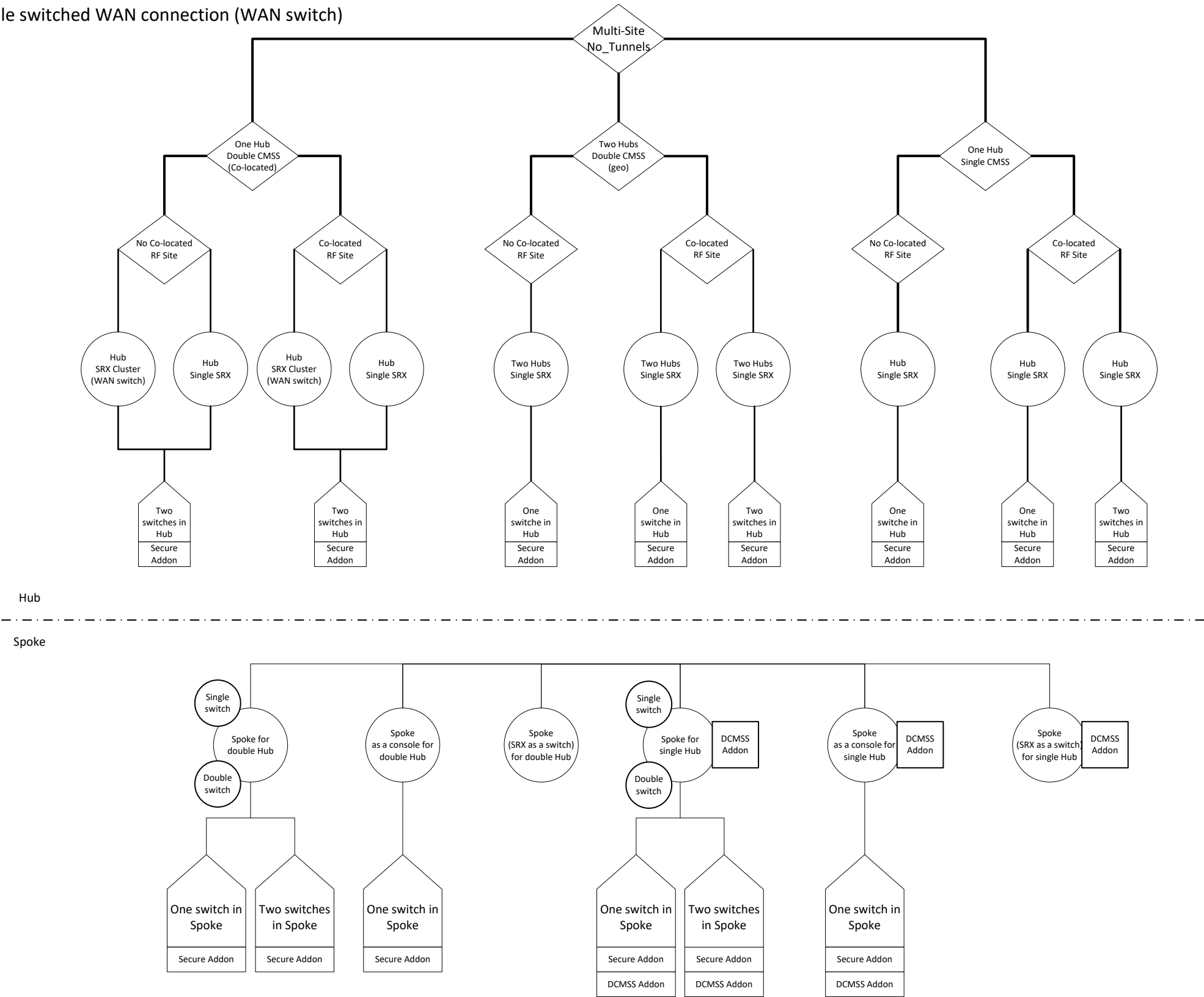
- Assumption:
- 1. SRX Cluster requires SRX345 and double switched WAN connection (WAN Switch)



Version 1.8	Capacity Max	PCR Transport
2021-01-20		
Juniper migration		
Single Site topology		

Assumptions:

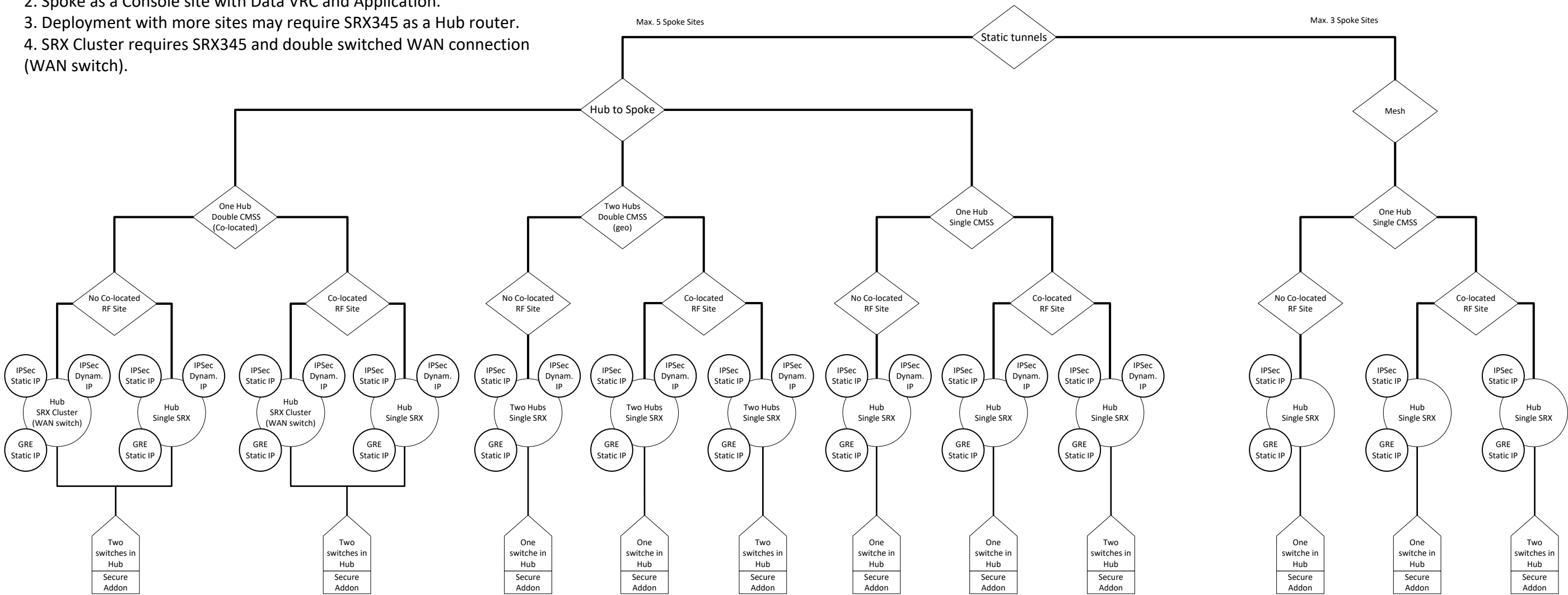
- 1. All IP addresses are static
- 2. Spoke as a console site with Data VRC and application.
- 3. Deployment with more sites may require SRX345 as a Hub router.
- 4. SRX Cluster requires SRX345 and double switched WAN connection (WAN switch)



Version 1.8	Capacity Max	PCR Transport
2021-01-20		
Juniper migration		
Multi-Site No_Tunnels topology		

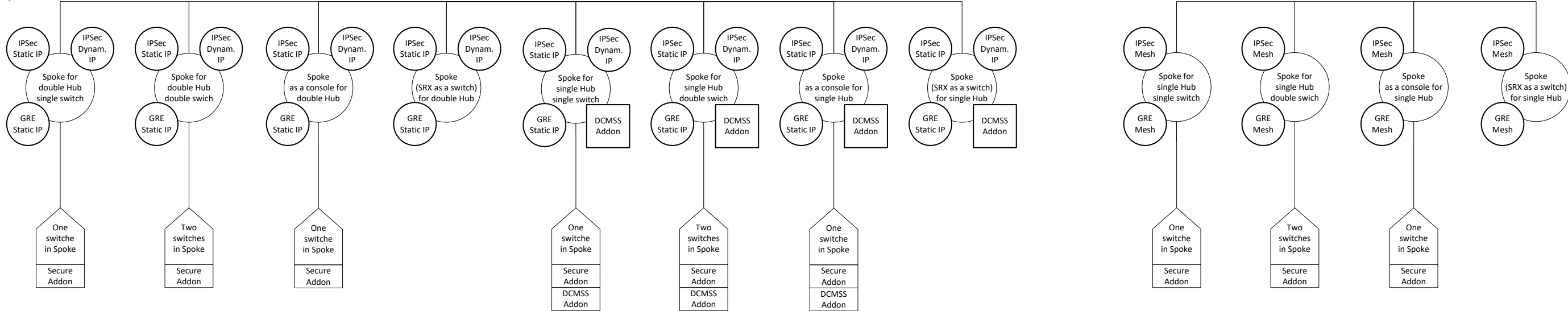
Assumptions:

- 1. Mesh topology is possible only for static WAN IP addresses.
- 2. Spoke as a Console site with Data VRC and Application.
- 3. Deployment with more sites may require SRX345 as a Hub router.
- 4. SRX Cluster requires SRX345 and double switched WAN connection (WAN switch).



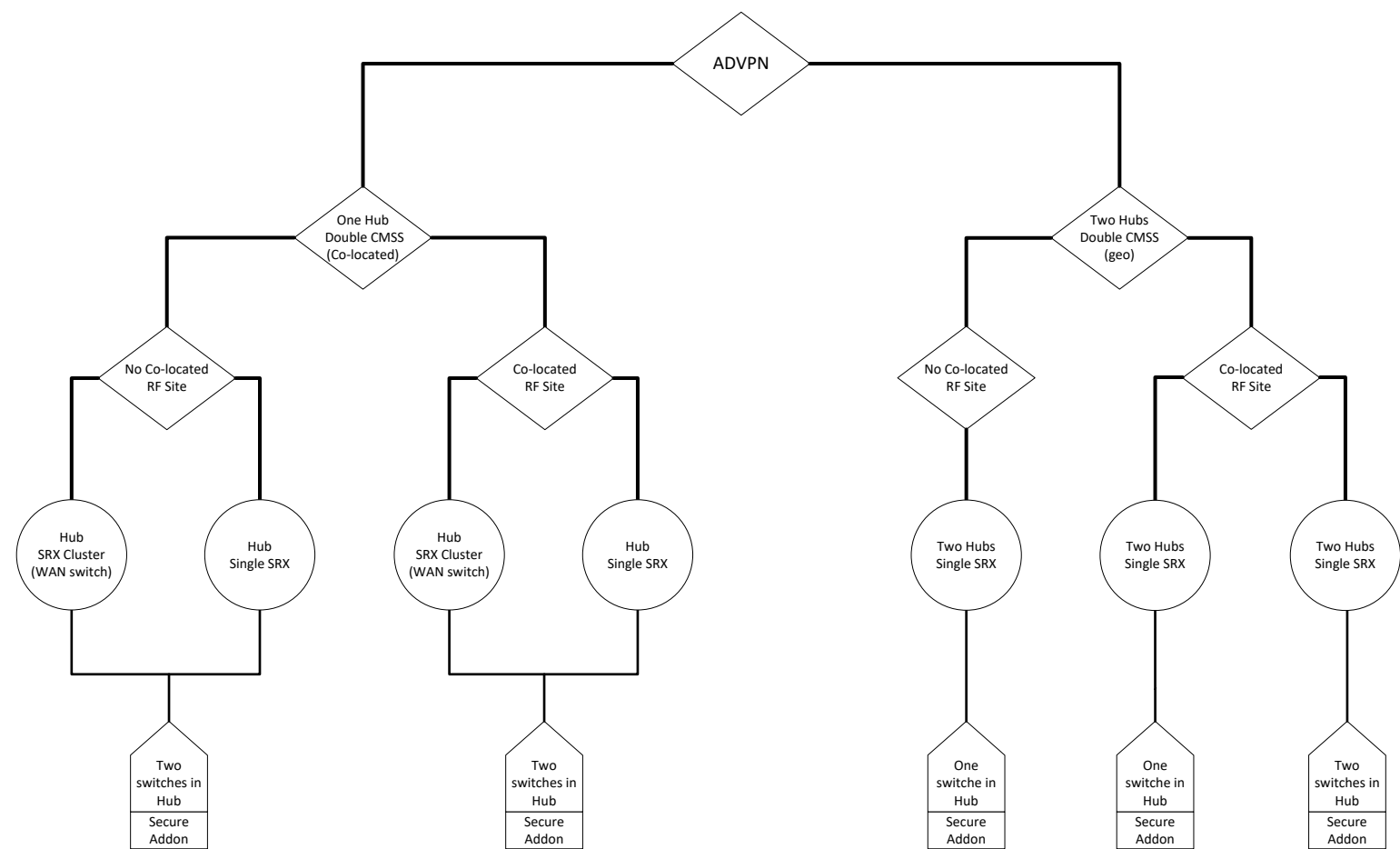
Hub

Spoke



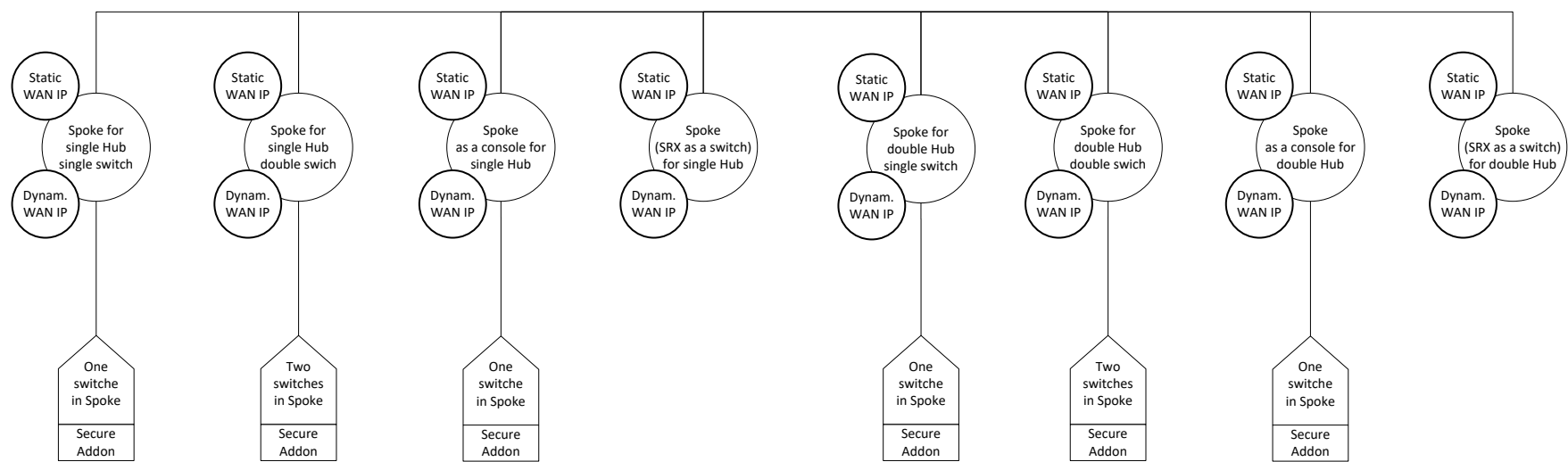
Version 1.8	Capacity Max	PCR Transport
2021-01-20		
Juniper migration		
Multi-Site static tunnels topology		

- Assumptions:
- 1. Spoke as a Console site with Data VRC and Application.
 - 2. Deployment with more sites may require SRX345 as a Hub router.
 - 3. SRX Cluster requires SRX345 and double switched WAN connection (WAN switch).



Hub

Spoke



Version 1.8	Capacity Max	PCR Transport
2021-01-20		
Juniper migration		
Multi-Site ADVPN topology		